

## FEBRUARY 2010 ECONOMIC OUTLOOK FOR THE EU27

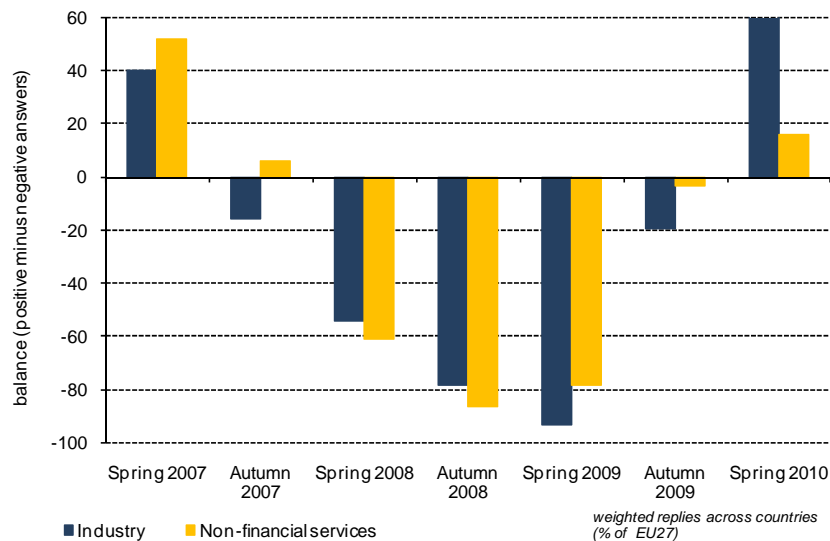
### MAIN FORECASTS

	2008	2009	2010
Real GDP (annual % growth)	0.9	-4.0	1.2
Inflation (%)	3.7	0.9	1.5
Unemployment (%)	7.0	8.9	10.2
Employment (annual % growth)	0.7	-1.7	-1.3
GDP components			
annual %-growth			
Private consumption	0.8	-1.5	0.5
Public consumption	2.4	2.0	1.2
Gross fixed capital formation	-0.3	-13.3	-1.6
Exports	1.7	-12.8	4.2
Imports	1.5	-12.6	2.8

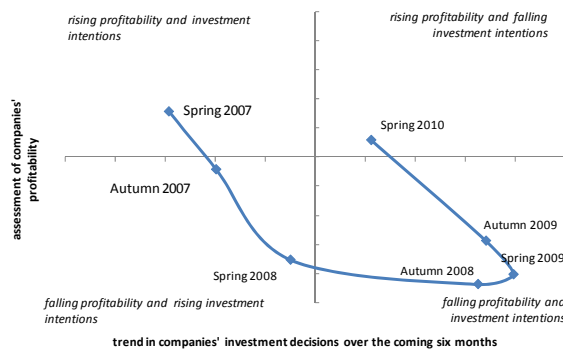
Source: BUSINESSEUROPE Economic Outlook (February 2010), Eurostat

### ECONOMIC SENTIMENT

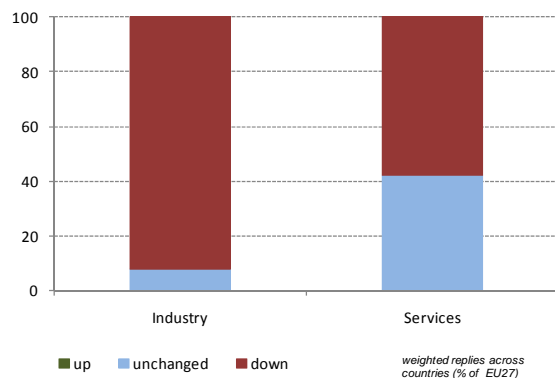
#### Assessment business confidence



#### Assessment of companies' profitability and investment intentions

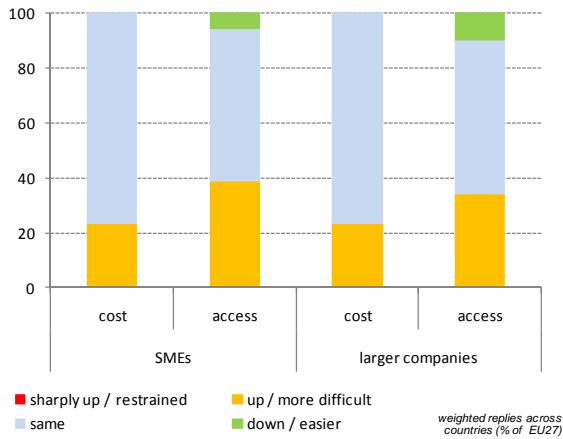


#### Employment intentions over the next six months

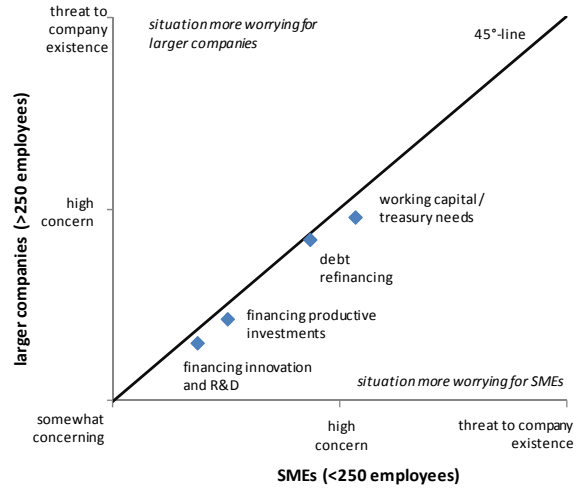


**ACCESS TO FINANCE**

*Assessment of companies' access to finance over the next six months*

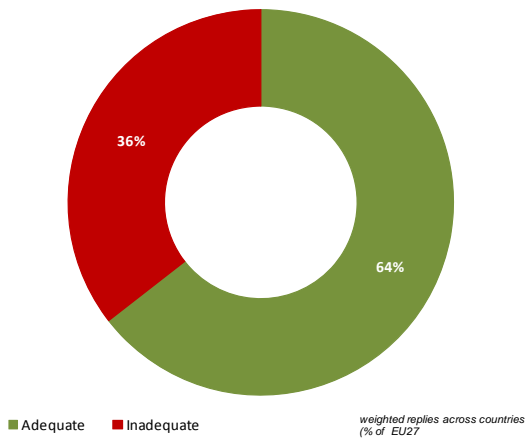


*Assessment of conditions in specific areas of companies' financing needs*



**POLICY MIX**

*Assessment of consistency between national fiscal and monetary measures*



*Assessment of governments' commitments to ensure sustainability of public finances*

